

## FedEx Memphis Hub

*Memphis, TN*

### FedEx Memphis Hub Installs Slip Resistant Galvanized Steel Treads for Semi-Enclosed Stairway

Company: FedEx Memphis Hub

Location: Memphis, TN

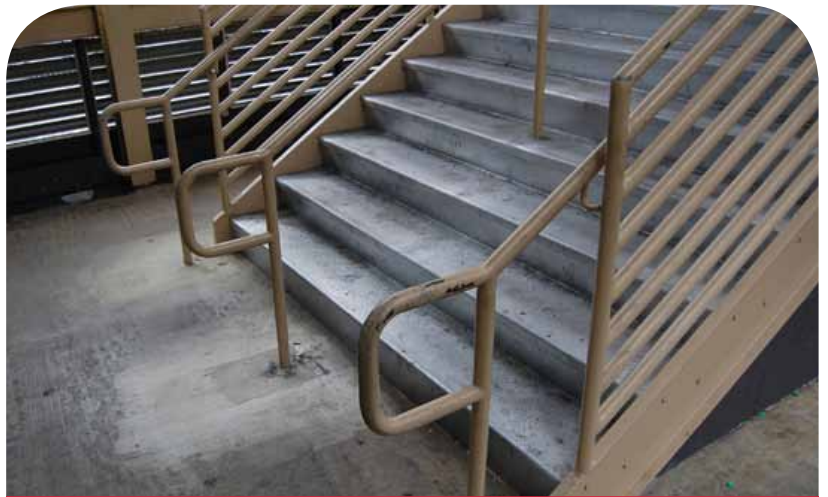
Industry: General

Website: [www.fedex.com](http://www.fedex.com)

*Federal Express was originally founded in 1971 and is based on an idea from a college paper written by the founder. FDX Corporation was created with the acquisition of Caliber Systems Inc. in 1998 and in 2000, the name of the company was changed to FedEx Corporation. Over 8.5 million packages are shipped express, ground, freight and expedited daily with FedEx.*

#### **The Situation:**

FedEx's Memphis hub has over 8,000 people access their stairways on a daily basis. When designing new semi-enclosed stairways for the hub, Askew Nixon Ferguson Architects contacted a fabricator to fabricate stair treads based on the drawings they provided. Together, the fabricator and Askew Nixon Ferguson Architects decided slip resistance was a must in the area where all different environments may be present.



#### **SlipNOT® Project Summary**

- 1/4" steel stair treads with Grade 3 steel coating applied and galvanized finish
- **SlipNOT®** provided FedEx with slip resistant galvanized steel stair treads for their semi-enclosed stairways.

### ***The Solution:***

A **SlipNOT®** sales representative worked closely with the fabricator and architect to determine what product best fit the needs of the FedEx hub. The fabricator manufactured ¼" steel stair treads based on the drawings provided and sent them to **SlipNOT®** for the non slip coating to be applied. **SlipNOT®** applied the patented steel surface to each stair tread, creating a 100% slip resistant surface in all directions. Since the treads were located in a semi-enclosed stairway exposed to outside elements and power washing for cleaning, they were galvanized to prevent rust and corrosion.



Steel products can either be painted or galvanized to prevent rust and corrosion when installed in areas where moisture is prevalent.

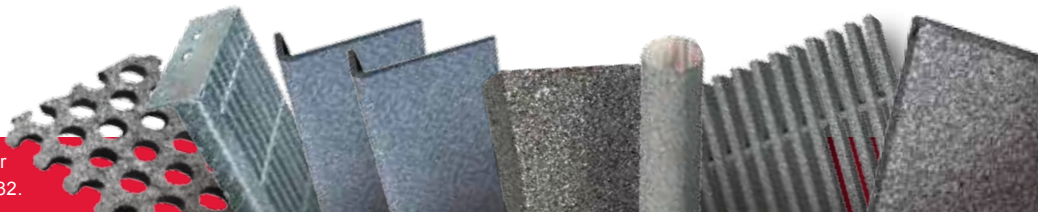
The Grade 3 steel surface was chosen due to the high amount of traffic volume passing through the stairways. Steel Grade 3 is used in the most demanding environments and provides traction when completely coated in water, oils or other lubricants. **SlipNOT®** steel has a bond strength of at least 4,000 psi and a surface hardness between 55 – 63 on the Rockwell "C" scale.

### ***The Impact:***

**SlipNOT®** shipped the coated stair treads back to the fabricator for installation. The treads were installed at the hub with a vertical 8 foot plate to reinforce them from below. The 8,000 people who pass through the FedEx hub each day can rely on **SlipNOT®** coated stair treads to keep them on their feet in any environment.

[www.slipnot.com](http://www.slipnot.com) | [info@slipnot.com](mailto:info@slipnot.com)

**SlipNOT®** Metal Safety Flooring products may be covered by one or more of the following patents; 5,711,119, 6,839,951 and 6,863,932.



Phone: 313.923.0400 | Toll Free: 800.754.7668 | Fax: 313.923.4555