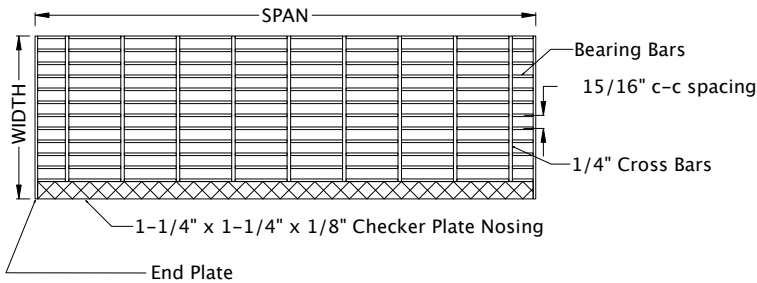


Available Widths	
7-1/16"	9-7/8"
8"	10-13/16"
8-15/16"	11-3/4"

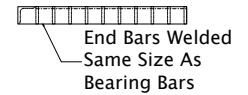
Available Alloys	
Steel	
Galvanized Steel	
Stainless Steel	



Bearing Bar Options	
1" x 3/16"	Max. Span 36"
1-1/4" x 3/16"	Max. Span 48"
1-1/2" x 3/16"	Max. Span 63"

Welded Construction

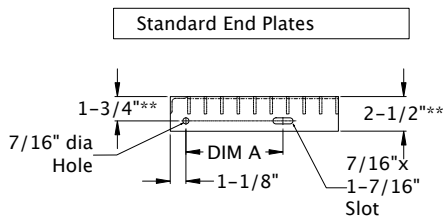
Trim Banded



End Plate Options

Width	DIM A
7-1/16"	4-1/2"
8"	4-1/2"
8-15/16"	4-1/2"
9-7/8"	7"
10-13/16"	7"
11-3/4"	7"

**3" End Plates for 1-1/2" or Greater Bearing Bars with 2-1/4" hole location



SlipNOT GRATING TREAD - 15W4

Copyright 2004, The WS Molnar Company
All Rights Reserved

SlipNOT
Metal Safety Flooring
2545 Beaufait Street
Detroit, Michigan 48207
800/754-7668 Phone
313/923-4555 Fax
info@slipnot.com (Email)