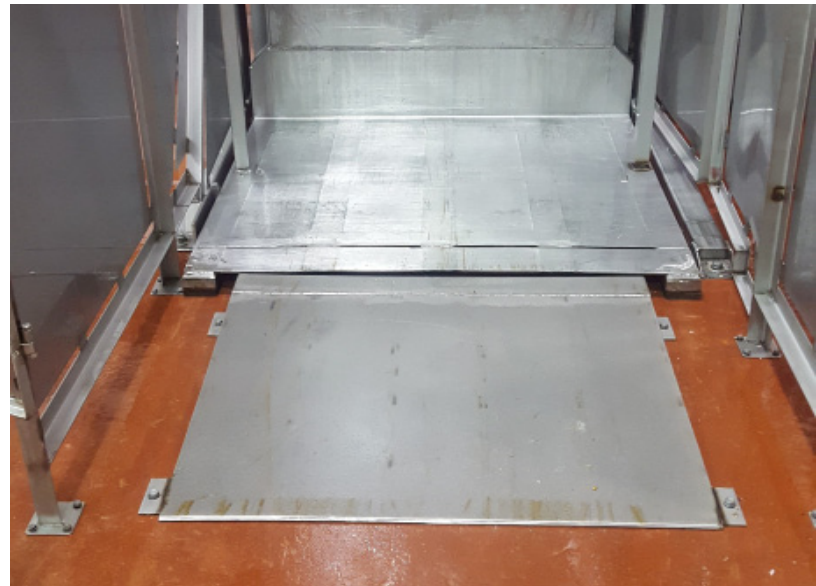




SUGARCREEK PACKING CO.

HAYWARD, CA

Anti-Slip Stainless Steel Gratings and Treads for Platform in SugarCreek Packing Plant



THE SITUATION

SugarCreek was established in 1966 with just one location and 25 employees. Today, the company employs over 1,500 workers and has six manufacturing and packing facilities located across three states in the Midwest. They are an innovative, diversified, and flexible food manufacturer assisting some of the food industries largest and well-known companies to develop food solutions for ready-to-eat bacon, turkey bacon, and meatballs.

There are many elements that are present in a meat processing facility such as fats, oils, blood, and more, that can make an area hazardous and slippery. SugarCreek needed a non-slip solution for a platform within the processing plant that was located in a high traffic area near the mixing tanks.

THE SOLUTION

In order to keep productivity high, SugarCreek contacted a metal contractor for an anti-slip platform and treads. The chief engineer of the company found SlipNOT®'s stainless steel Grip Grate® and grating treads to be a perfect solution. SugarCreek was provided with (6) 1-1/4 x 3/16 x 9-3/4" x 24 and (2) 1-1/4" x 3/16" x 23-15/16" x 124-1/2" stainless 19W4 grating & treads. Not only is stainless steel critical for food industries because of its anti-corrosion and chemical resistant properties, the 19W4 spacing of the grating allows for liquid and other debris to fall through below.

THE IMPACT

The installation of the new anti-slip stainless steel plates and stair treads provide workers sure footing, which in turn increases productivity. High traction flooring is imperative in these environments, as employees are tracking and transferring debris on the bottom of their shoes throughout the plant. SlipNOT®'s stainless steel products are NSF registered and currently used in numerous processing plants such as meat, cheese, dairy, beverage and processed foods.

After receiving and installing the grating, SugarCreek placed another order with SlipNOT® for (1) 1/4 x 4 x 4 304 stainless plate. The material was used for a ramp for a pallet jack to load product onto a dumper truck.